

Questions

1. Describe briefly the purpose (the use) of the tree of life (evolutionary tree)

The purpose is to relate different species (alive and extinguished).

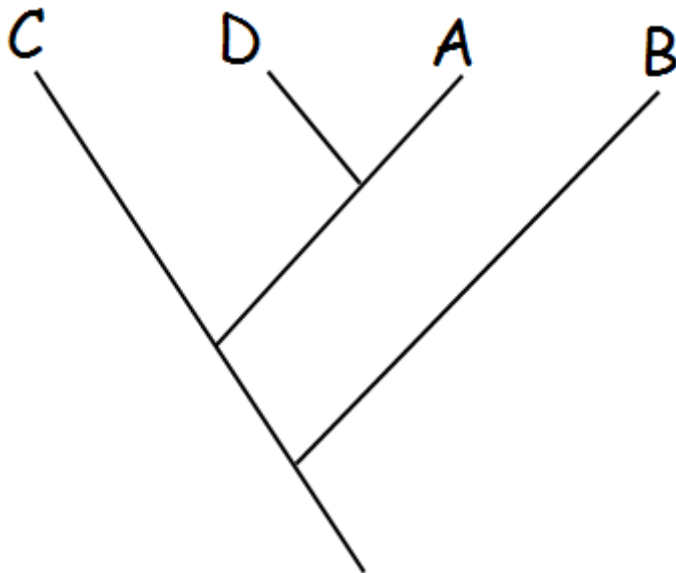
It helps to explain how life evolved.

2. Explain the concept of "common ancestor"

The first species which, by mutation, made possible all known forms of life.

3. Build up the partial tree of life for those four species A, B, C, and D:

- C is a common ancestor of the rest of species
- B is a early mutation of C
- A is a late mutation of C
- D is a mutation of A



4. Explain the advantage of placing a harmful unknown bacteria into a tree of life

Knowing how similar forms of life can be neutralised (killed) we can have a clear view of how to deal with this unknown bacteria.

5. Describe what are the computers for in this case (the article)

They are used to combine different parts of the evolutionary tree

6. Explain briefly the main discovery / hypothesis described in the article

Two very different forms of life are related: the birds come from dinosaurs.