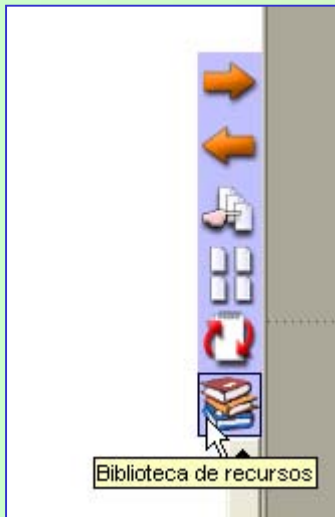


# Baliabideak



Biltegietan (karpetetako fitxategi grafikoak, bideoak, programaren baliabideen liburutegia...) ditugun baliabideak ADIren lanerako pantailan sar daitezke.

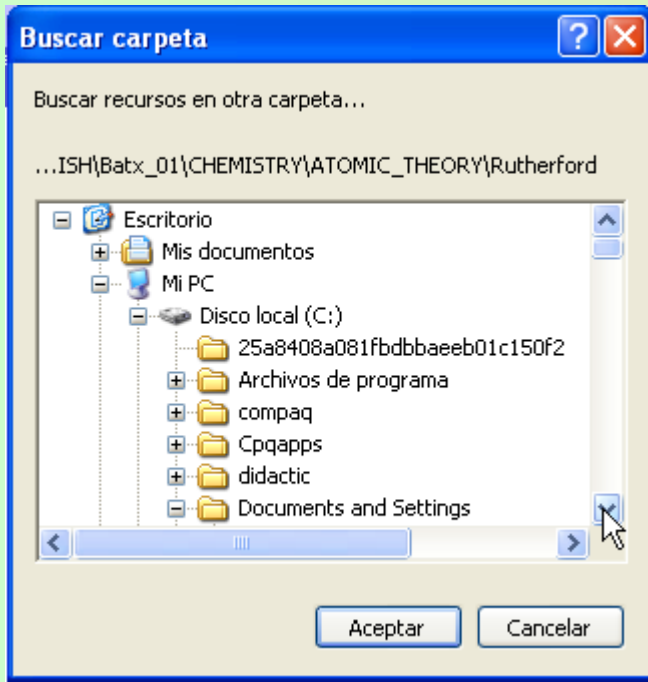
Horretarako, "Biblioteca de recursos" botoia sakatu liburutegia eta fitxategietarako bideak irekitzeko.

Klik egitean, eskuinean agertzen den leihoaren antzekoa agertuko zaigu.

Karpetak irekitzeko botoia sakatuko dugu.



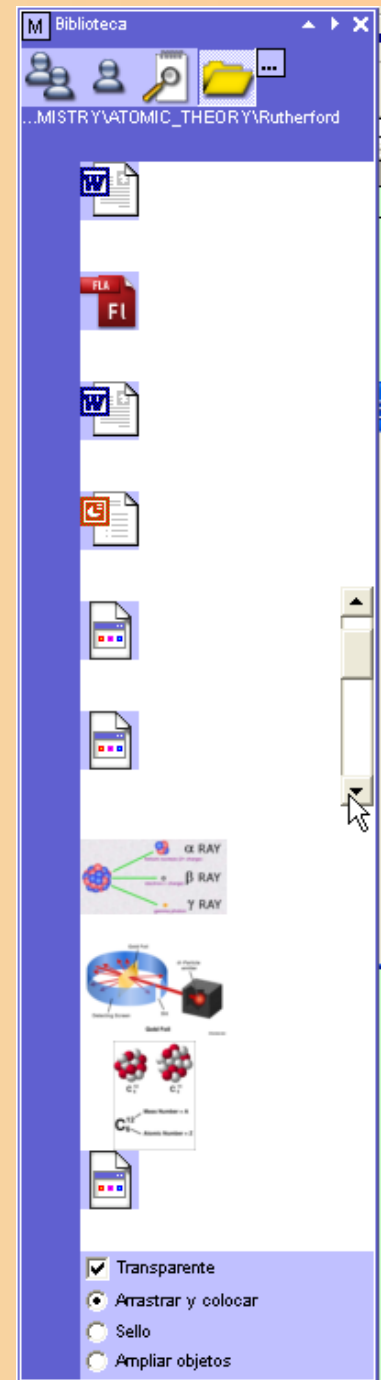
# Baliabideak



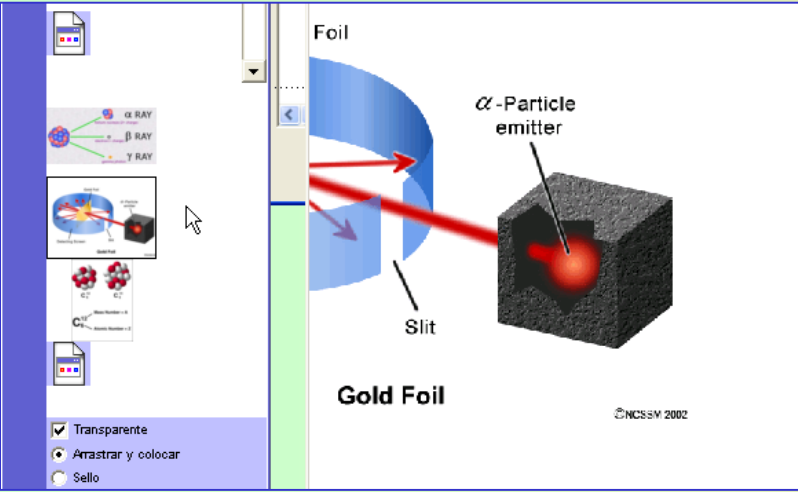
Karpeten artean nabigatuko dugu gure baliabideak aurkitu arte.

Karpetaren baliabideak agertuko zaizkigu.

Desplazamendu-barraren bitartez baliabide guztiak ikusiko ditugu.

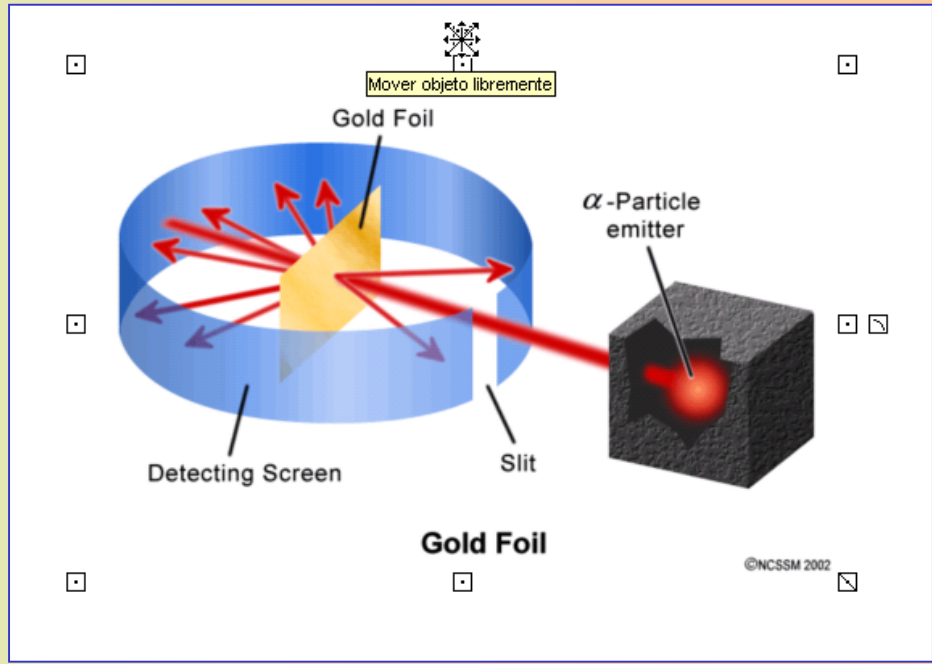


# Baliabideak

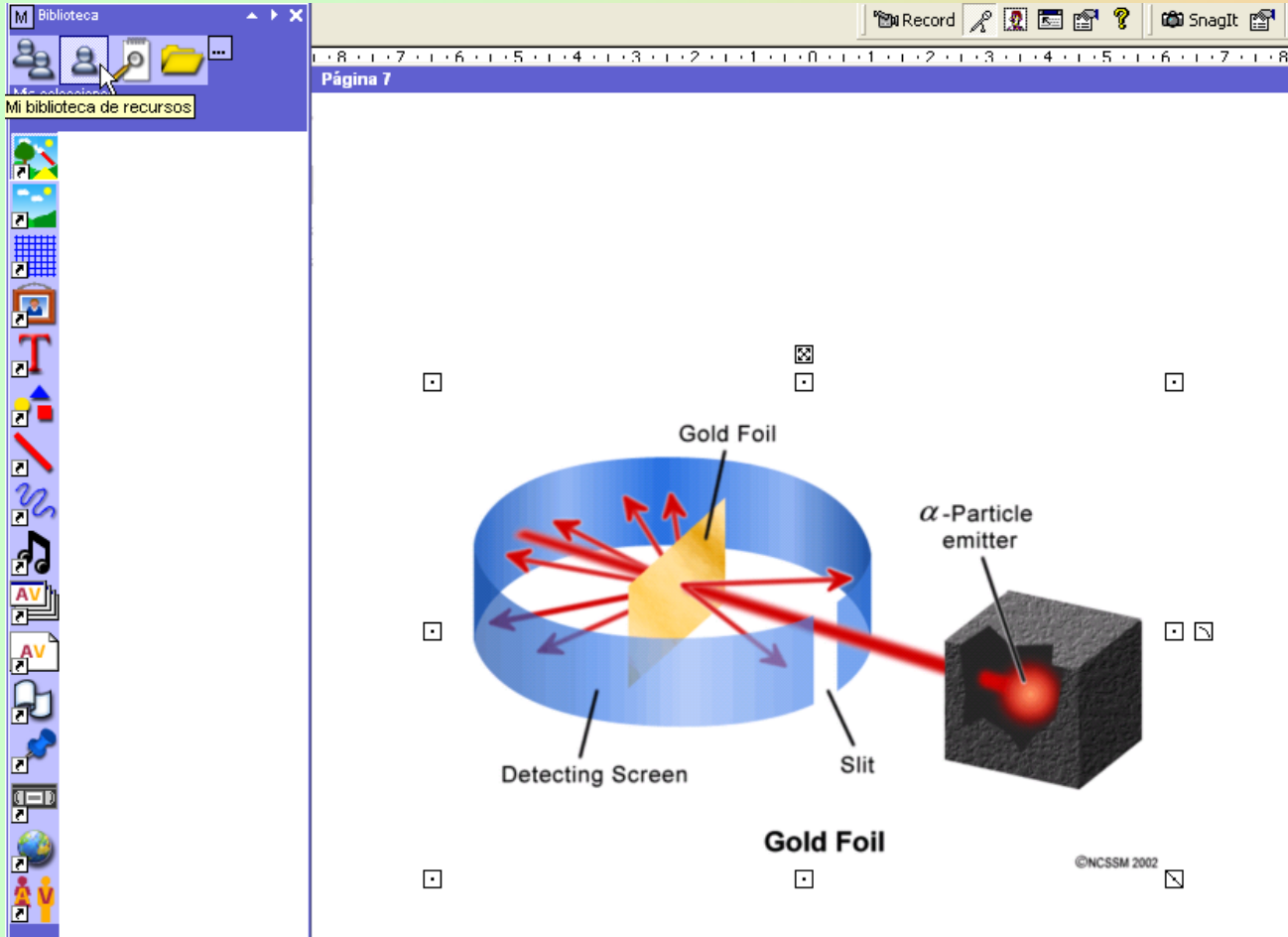


Arrastatuz eta eramanez gure baliabidea lanerako pantailan sartuko dugu.

Elementua hautatu eta editatu dezakegu: biratu, tamaina aldatu...

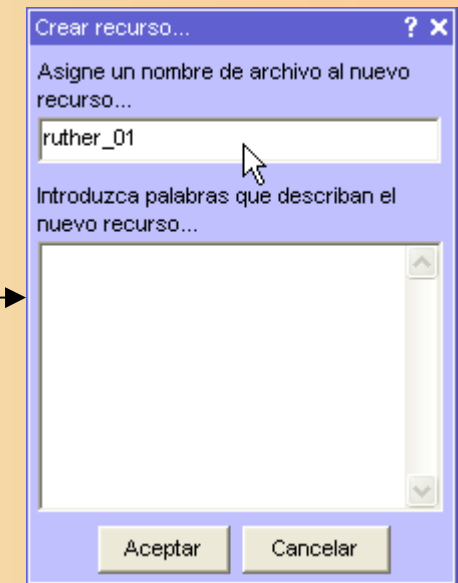
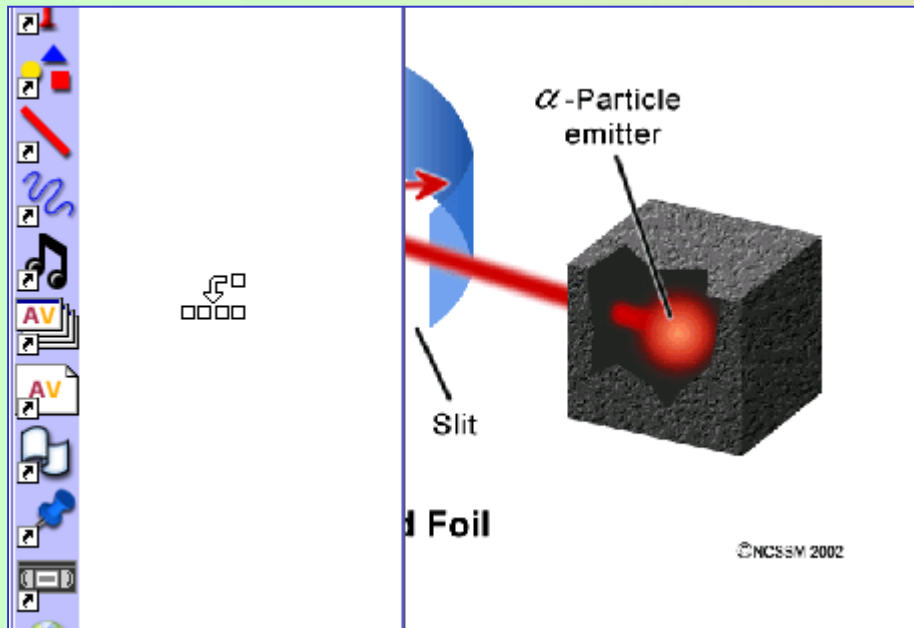


# Baliabideak



Lanerako pantailan sartu dugun baliabidea gure liburutegian sartuko dugu, beste momentu batean azkarrago eskuratzeko.

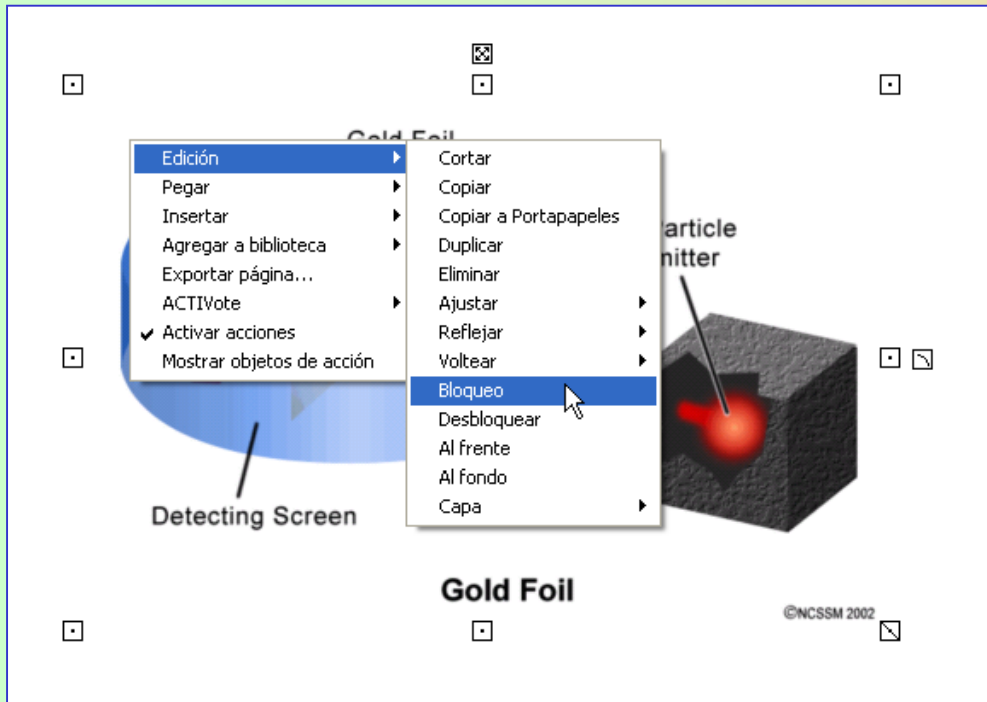
# Baliabideak



Gure baliabideen eskualdera eramán behar dugu baliabidea eta bertan askatu.

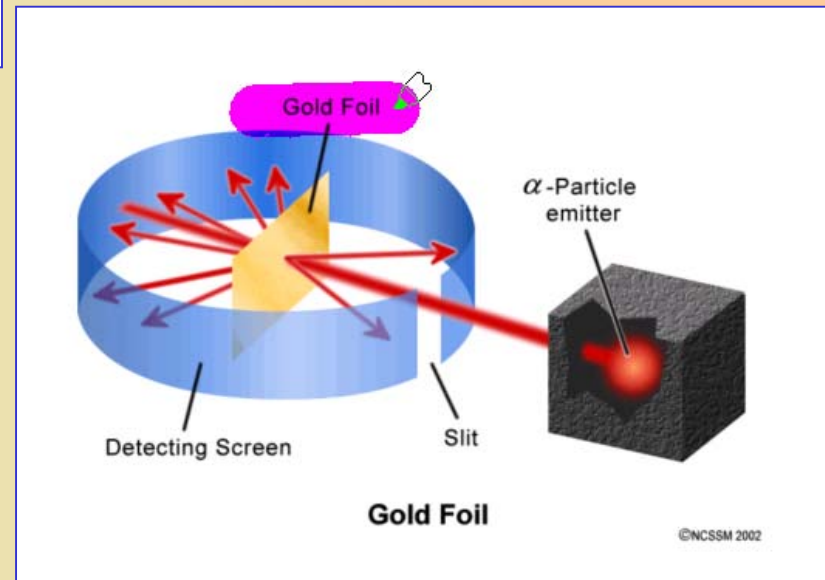
Izena emateko koadroa agertuko da eta jarraian baliabidea sartuta dago, erabiltzeko prest

# Baliabideak

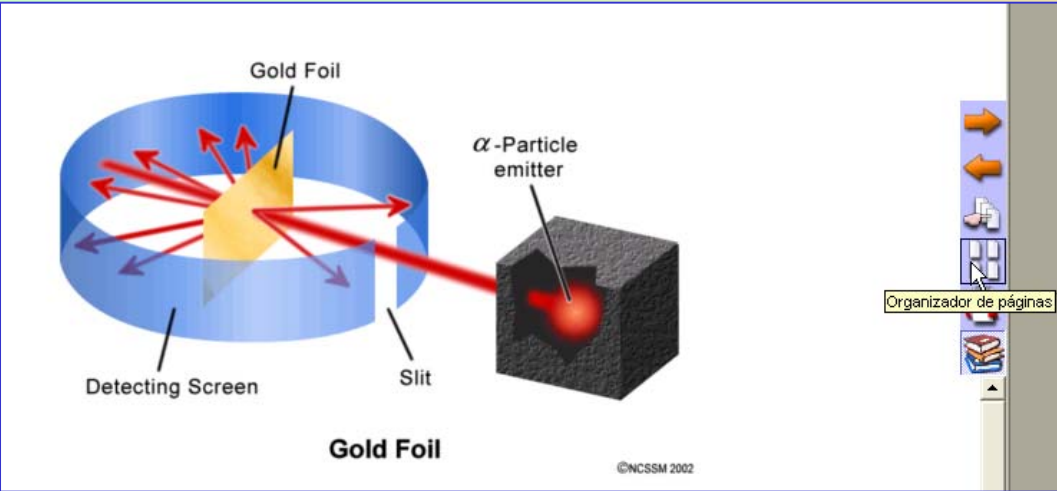


Irudia gure pantailara ekarri dugunean, zenbait edizio-eragileta egin daitezke.

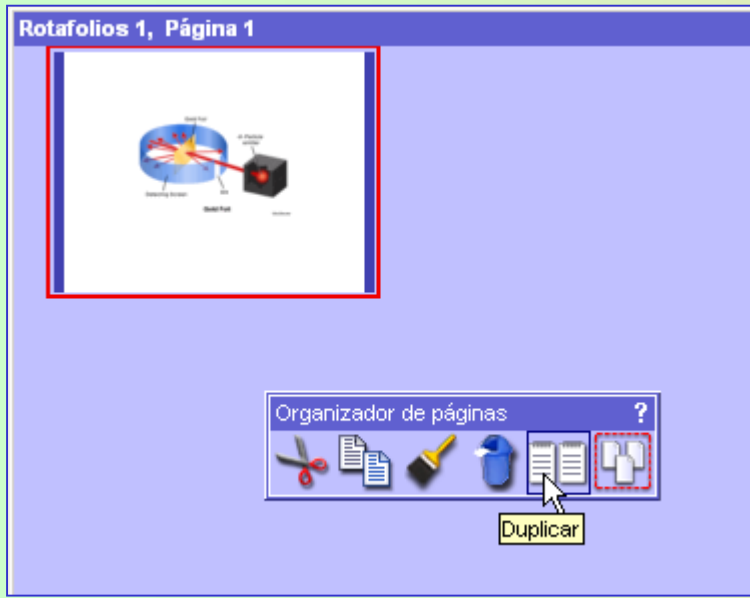
Horien artean, blokeoa dago. Blokeoa aktibatzen denean elementu grafiko hori fondoaren parte bihurtzen da (desblokeatu arte) eta errazagoa da bere gainean lana egitea.



# Baliabideak



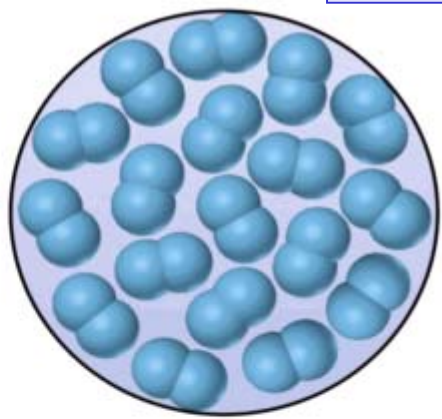
Irudiaren gainean azalpen luzeak eman behar baditugu, pantaila bat baino gehiagotan garatu behar direnak, posible da irudia duen orria bikoiztea, eta azalpen luze horiek erraztu.



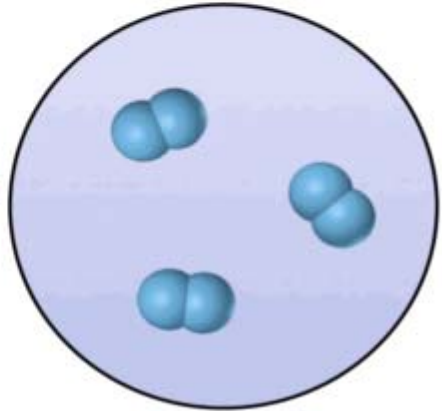
# Baliabideak

## Adibideak

<http://wps.prenhall.com>



(a)

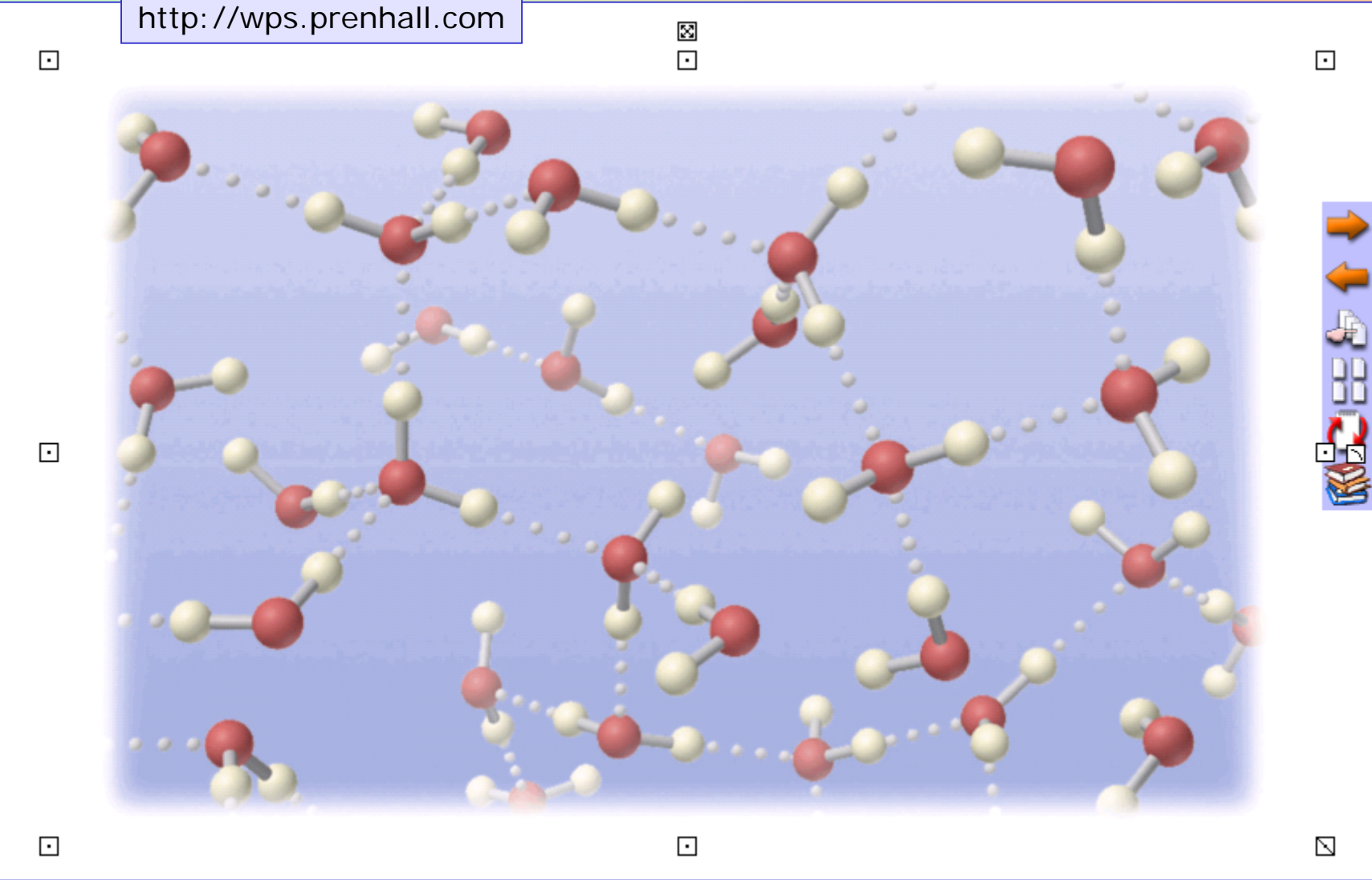


(b)



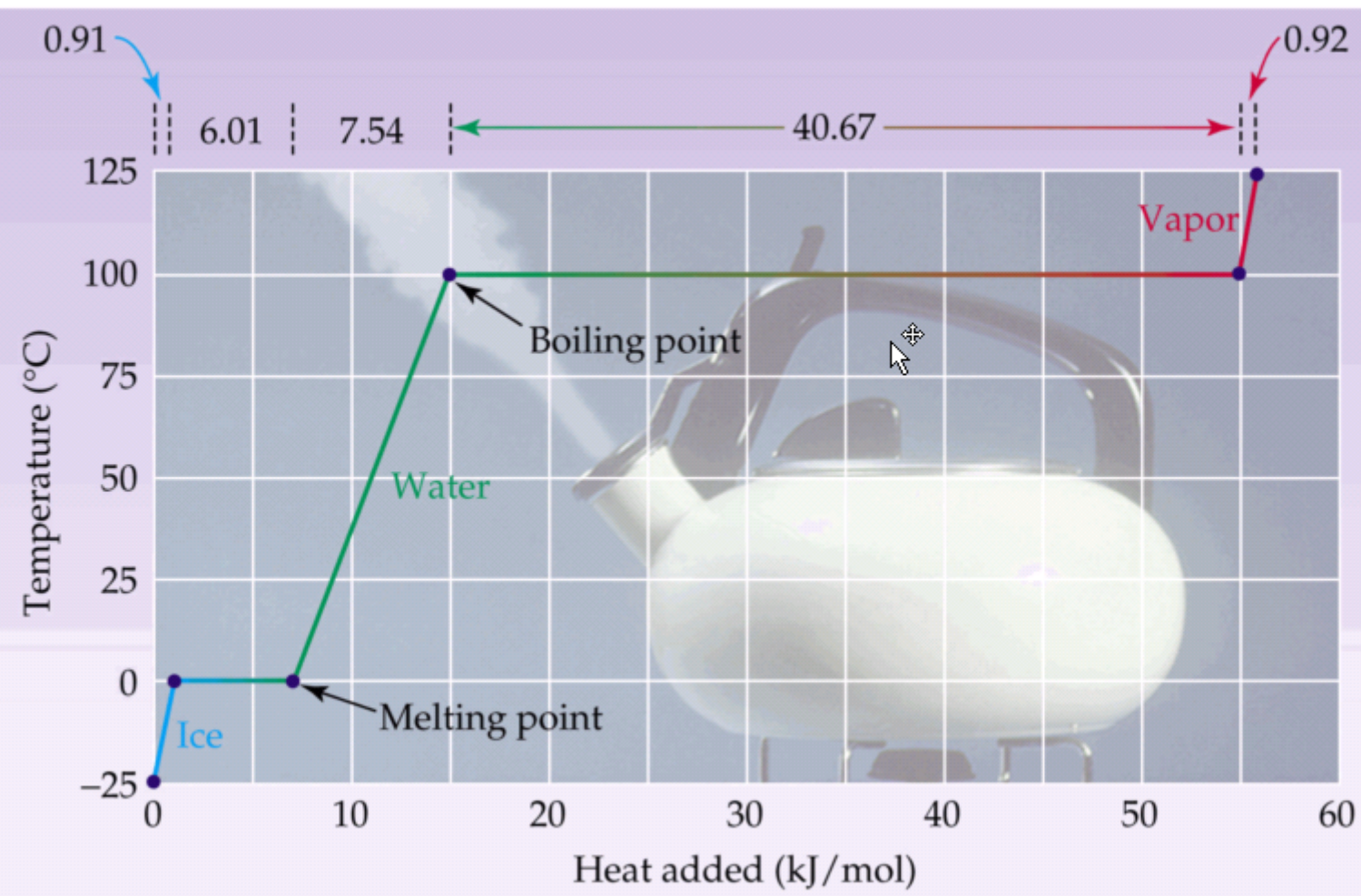
# Baliabideak

<http://wps.prenhall.com>



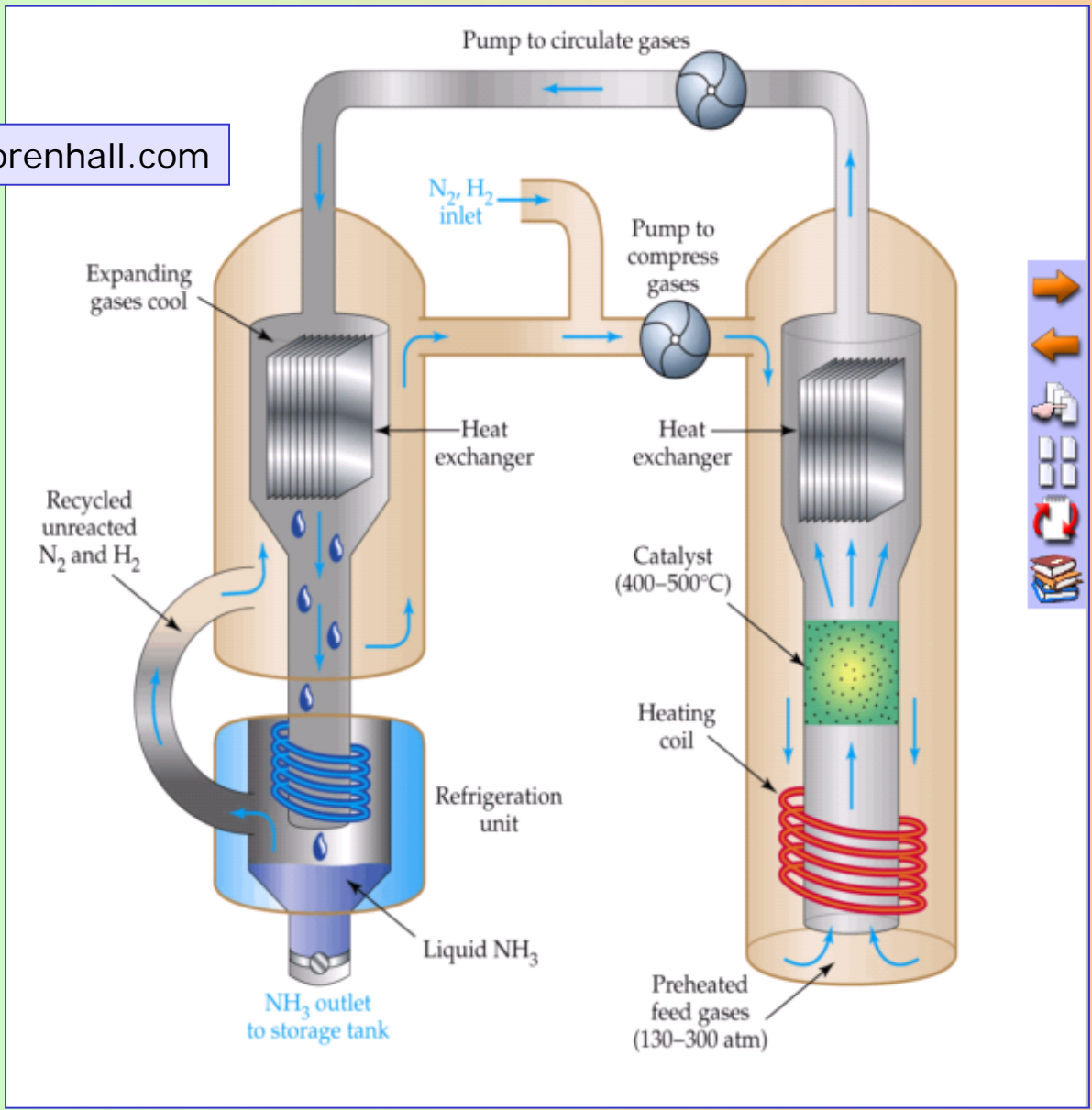
# Baliabideak

<http://wps.prenhall.com>



# Baliabideak

<http://wps.prenhall.com>



# Baliabideak

<http://wps.prenhall.com>

The image illustrates the concept of electrical conductivity in different media. It is divided into two parts, (a) and (b), each showing a physical setup and a corresponding diagram.

**Part (a):** The top photograph shows a lit light bulb connected to a battery in a beaker of water. The bottom diagram shows a battery with a positive terminal (red) and a negative terminal (blue). Blue circles with minus signs (anions) are shown moving towards the positive terminal, and red circles with plus signs (cations) are shown moving towards the negative terminal. This movement of ions completes the circuit, allowing current to flow and the bulb to light up.

**Part (b):** The top photograph shows the same setup but the light bulb is unlit. The bottom diagram shows the same battery terminals, but instead of ions, there are green oval particles scattered around. These particles do not move towards the electrodes, so no current flows and the bulb remains unlit.

# Baliabideak

<http://wps.prenhall.com>

1 H $1s^1$																	2 He $1s^2$
3 Li $2s^1$	4 Be $2s^2$											5 B $2s^2 2p^1$	6 C $2s^2 2p^2$	7 N $2s^2 2p^3$	8 O $2s^2 2p^4$	9 F $2s^2 2p^5$	10 Ne $2s^2 2p^6$
11 Na $3s^1$	12 Mg $3s^2$											13 Al $3s^2 3p^1$	14 Si $3s^2 3p^2$	15 P $3s^2 3p^3$	16 S $3s^2 3p^4$	17 Cl $3s^2 3p^5$	18 Ar $3s^2 3p^6$
19 K $4s^1$	20 Ca $4s^2$	21 Sc $4s^2 3d^1$	22 Ti $4s^2 3d^2$	23 V $4s^2 3d^3$	24 Cr $4s^1 3d^5$	25 Mn $4s^2 3d^5$	26 Fe $4s^2 3d^6$	27 Co $4s^2 3d^7$	28 Ni $4s^2 3d^8$	29 Cu $4s^1 3d^{10}$	30 Zn $4s^2 3d^{10}$	31 Ga $4s^2 3d^{10} 4p^1$	32 Ge $4s^2 3d^{10} 4p^2$	33 As $4s^2 3d^{10} 4p^3$	34 Se $4s^2 3d^{10} 4p^4$	35 Br $4s^2 3d^{10} 4p^5$	36 Kr $4s^2 3d^{10} 4p^6$
37 Rb $5s^1$	38 Sr $5s^2$	39 Y $5s^2 4d^1$	40 Zr $5s^2 4d^2$	41 Nb $5s^1 4d^4$	42 Mo $5s^1 4d^5$	43 Tc $5s^2 4d^5$	44 Ru $5s^1 4d^7$	45 Rh $5s^1 4d^8$	46 Pd $4d^{10}$	47 Ag $5s^1 4d^{10}$	48 Cd $5s^2 4d^{10}$	49 In $5s^2 4d^{10} 5p^1$	50 Sn $5s^2 4d^{10} 5p^2$	51 Sb $5s^2 4d^{10} 5p^3$	52 Te $5s^2 4d^{10} 5p^4$	53 I $5s^2 4d^{10} 5p^5$	54 Xe $5s^2 4d^{10} 5p^6$
55 Cs $6s^1$	56 Ba $6s^2$	57 La $6s^2 5d^1$	72 Hf $6s^2 4f^{14} 5d^2$	73 Ta $6s^2 4f^{14} 5d^3$	74 W $6s^2 4f^{14} 5d^4$	75 Re $6s^2 4f^{14} 5d^5$	76 Os $6s^2 4f^{14} 5d^6$	77 Ir $6s^2 4f^{14} 5d^7$	78 Pt $6s^1 4f^{14} 5d^9$	79 Au $6s^1 4f^{14} 5d^{10}$	80 Hg $6s^2 4f^{14} 5d^{10}$	81 Tl $6s^2 4f^{14} 5d^{10} 6p^1$	82 Pb $6s^2 4f^{14} 5d^{10} 6p^2$	83 Bi $6s^2 4f^{14} 5d^{10} 6p^3$	84 Po $6s^2 4f^{14} 5d^{10} 6p^4$	85 At $6s^2 4f^{14} 5d^{10} 6p^5$	86 Rn $6s^2 4f^{14} 5d^{10} 6p^6$
87 Fr $7s^1$	88 Ra $7s^2$	89 Ac $7s^2 6d^1$	104 Rf $7s^2 5f^{14} 6d^2$	105 Db $7s^2 5f^{14} 6d^3$	106 Sg $7s^2 5f^{14} 6d^4$	107 Bh $7s^2 5f^{14} 6d^5$	108 Hs $7s^2 5f^{14} 6d^6$	109 Mt $7s^2 5f^{14} 6d^7$	110 —	111 —	112 —	114 —	116 —				

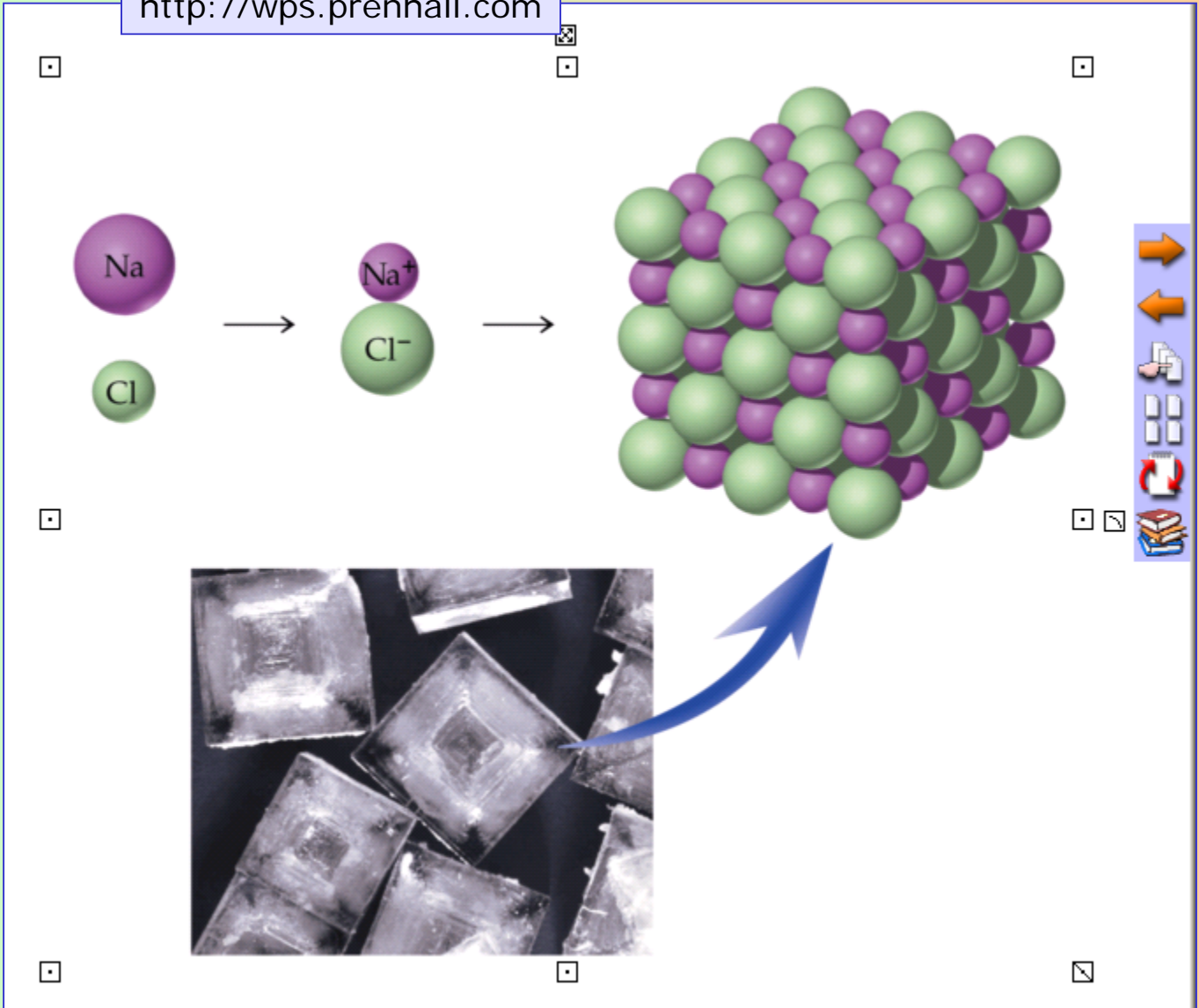


58 Ce $6s^2 4f^1 5d^1$	59 Pr $6s^2 4f^3$	60 Nd $6s^2 4f^4$	61 Pm $6s^2 4f^5$	62 Sm $6s^2 4f^6$	63 Eu $6s^2 4f^7$	64 Gd $6s^2 4f^7 5d^1$	65 Tb $6s^2 4f^9$	66 Dy $6s^2 4f^{10}$	67 Ho $6s^2 4f^{11}$	68 Er $6s^2 4f^{12}$	69 Tm $6s^2 4f^{13}$	70 Yb $6s^2 4f^{14}$	71 Lu $6s^2 4f^{14} 5d^1$
90 Th $7s^2 6d^2$	91 Pa $7s^2 5f^2 6d^1$	92 U $7s^2 5f^3 6d^1$	93 Np $7s^2 5f^4 6d^1$	94 Pu $7s^2 5f^6$	95 Am $7s^2 5f^7$	96 Cm $7s^2 5f^7 6d^1$	97 Bk $7s^2 5f^9$	98 Cf $7s^2 5f^{10}$	99 Es $7s^2 5f^{11}$	100 Fm $7s^2 5f^{12}$	101 Md $7s^2 5f^{13}$	102 No $7s^2 5f^{14}$	103 Lr $7s^2 5f^{14} 6d^1$



# Baliabideak

<http://wps.prenhall.com>



# Baliabideak

Rotafolios 1, Págin 9

Organizador de páginas ?